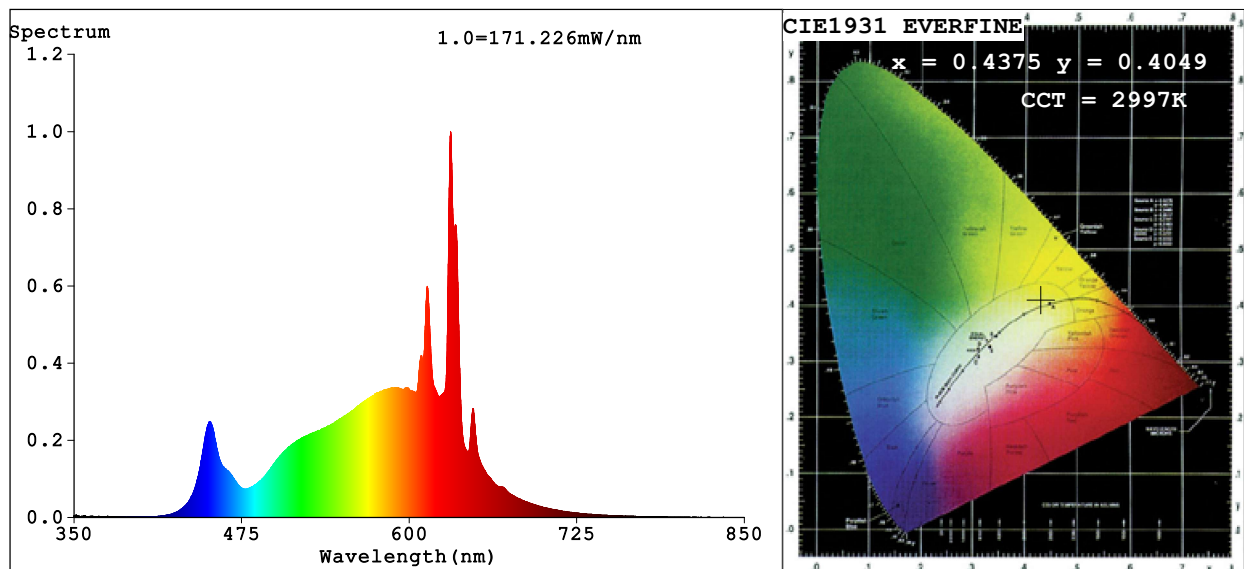


## Spectrum Test Report



### Color Parameters:

Chromaticity Coordinate:  $x=0.4375$   $y=0.4049$   $u'=0.2506$   $v'=0.5218$

CCT=2997K (Duv=0.0002) Dominant WL:Ld =582.8nm Purity=52.8%

Ratio:R=24.3% G=73.0% B=2.6%; Peak WL:Lp=630.9nm FWHM=8.4nm

Render Index:Ra=91.2 CRI=87.5 TM30:Rf=89 Rg=100

R1 =92 R2 =95 R3 =96 R4 =92 R5 =91 R6 =94 R7 =91

R8 =79 R9 =51 R10=86 R11=93 R12=77 R13=92 R14=97 R15=87

### Photo Parameters:

Flux = 3446 lm Eff. : 111.97 lm/W Fe = 10.09 W

### Electrical parameters:

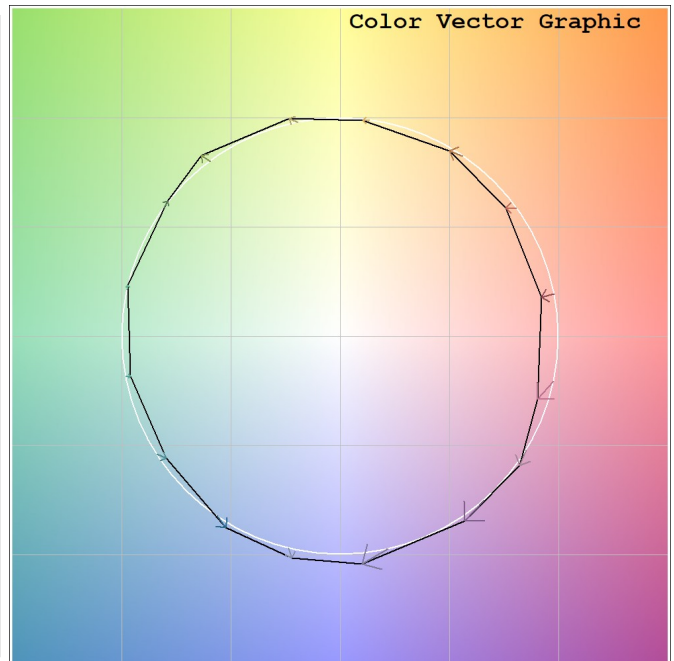
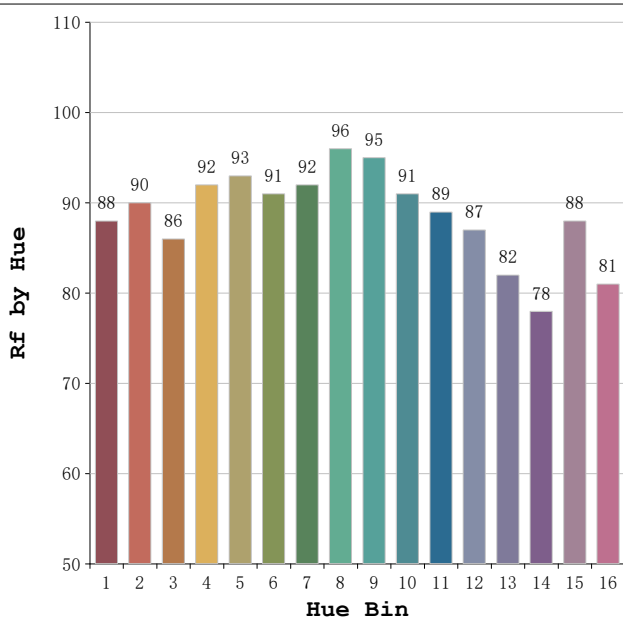
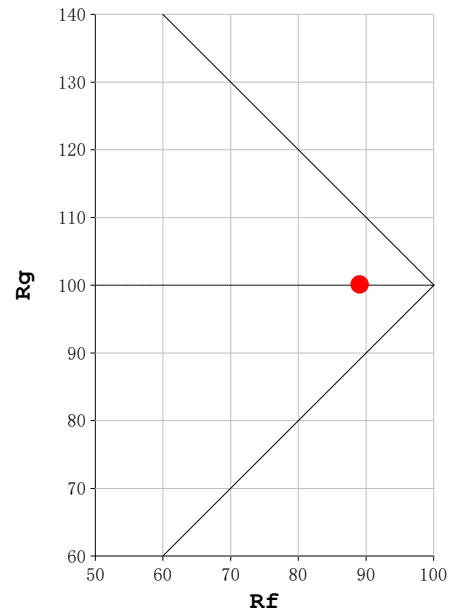
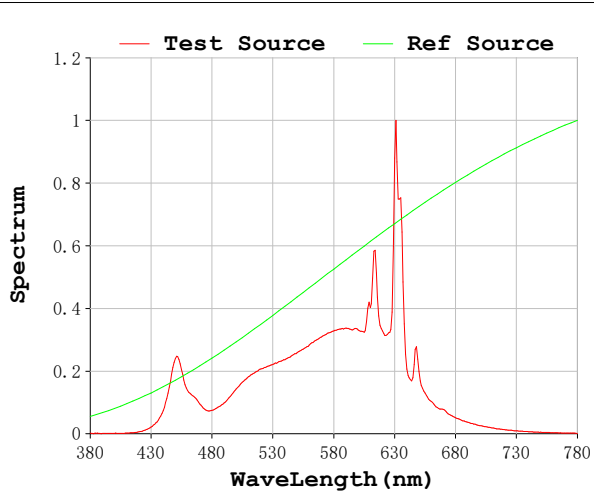
V = 230.05 V I = 0.1391 A P = 30.78 W PF = 0.9618

Status: Integral T = 167 ms Ip = 46585 (71%)

Model:Spotia 30w negro  
Tester:Sergio Carneros  
Temperature:20Deg  
Manufacturer:Luz Negra

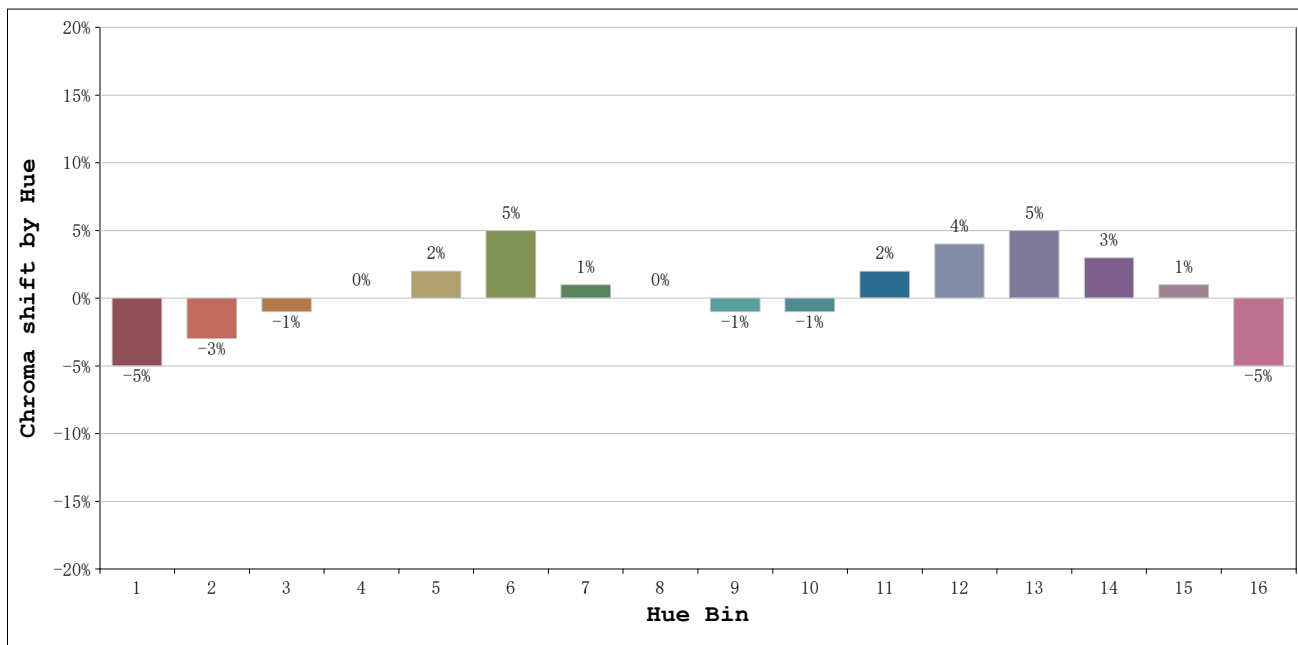
Number:3000k 56°  
Date:2026-03-23 10:23:59  
Humidity:50%  
Remarks:1 unidad

**Rf: 89**      **CCT: 2997 K**      **u': 0.2506**  
**Rg: 100**      **Duv: 0.0002**      **v': 0.5218**



Model:Spotia 30w negro  
 Tester:Sergio Carneros  
 Temperature:20Deg  
 Manufacturer:Luz Negra

Number:3000k 56°  
 Date:2026-03-23 10:23:59  
 Humidity:50%  
 Remarks:1 unidad



|         |                 |    | Graphic shift(%) |     |
|---------|-----------------|----|------------------|-----|
| Hue Bin | Hue Angle       | Rf | Chroma           | Hue |
| 1       | 0.0° - 22.5°    | 88 | -5               | 0   |
| 2       | 22.5° - 45.0°   | 90 | -3               | 3   |
| 3       | 45.0° - 67.5°   | 86 | -1               | 6   |
| 4       | 67.5° - 90.0°   | 92 | 0                | 3   |
| 5       | 90.0° - 112.5°  | 93 | 2                | 4   |
| 6       | 112.5° - 135.0° | 91 | 5                | 2   |
| 7       | 135.0° - 157.5° | 92 | 1                | -3  |
| 8       | 157.5° - 180.0° | 96 | 0                | -1  |
| 9       | 180.0° - 202.5° | 95 | -1               | 0   |
| 10      | 202.5° - 225.0° | 91 | -1               | 4   |
| 11      | 225.0° - 247.5° | 89 | 2                | 6   |
| 12      | 247.5° - 270.0° | 87 | 4                | 2   |
| 13      | 270.0° - 292.5° | 82 | 5                | -12 |
| 14      | 292.5° - 315.0° | 78 | 3                | -12 |
| 15      | 315.0° - 337.5° | 88 | 1                | -6  |
| 16      | 337.5° - 360.0° | 81 | -5               | -9  |

Model:Spotia 30w negro  
 Tester:Sergio Carneros  
 Temperature:20Deg  
 Manufacturer:Luz Negra

Number:3000k 56°  
 Date:2026-03-23 10:23:59  
 Humidity:50%  
 Remarks:1 unidad